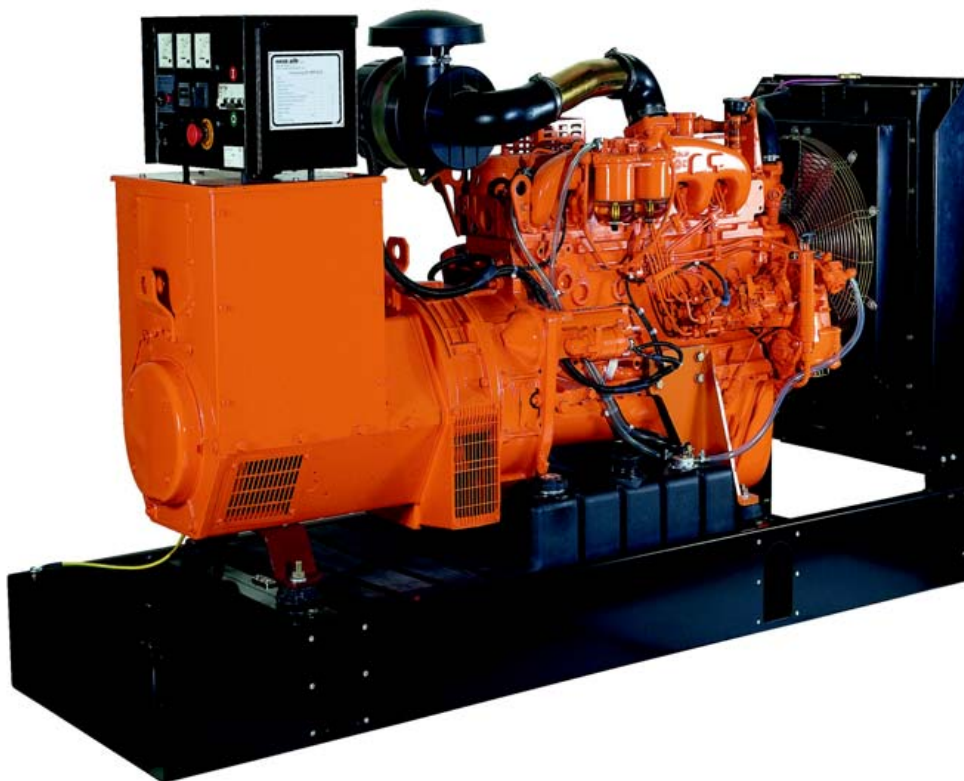


# GENERATING SET



# GE806 li06



## PERFORMANCES

RATINGS	50 Hz		60 Hz	
	kVA	kW	kVA	kW
PRIME	60	48	70	56
STAND-BY	67	54	77	62

Ratings at 0.8 p.f. - Standard reference conditions : 27°C air inlet temperature ; 1000 mbar ; 30% relative humidity.

### STAND-BY POWER

Applicable for supplying emergency electrical power for the duration of the utility power outage.  
No overload capability is available for this rating.

### PRIME POWER

Applicable for supplying electrical power in lieu of commercially purchased power. Prime power is the maximum power available at variable load for an unlimited running time.  
A 10% overload capacity is available for governing purposes only.

## TECHNICAL DATA

Engine model	806 li06	Frequency	50 Hz	60 Hz		
N° of cylinders	6 in line	Fuel consumption at :	75% load	l/h	9.7	11.8
Total displacement	liters		100% load	l/h	12.9	15.1
Aspiration	natural					
Cooling system	liquid	Available voltages	V	110/190 to 120/208		
Lube oil consumption	~ 0.3% of fuel consumption			220/380 to 254/440 (50 Hz)		
				220/380 to 277/480 (60 Hz)		
Generating set dimensions (L x W x H)	mm 2190 x 700 x 1300	Dry weight with standard accessories	kg	~ 900		

## STANDARD CONFIGURATION

### 1. ENGINE DRIVE

IVECO heavy duty diesel engine.

#### 1.1 Governor

Mechanical, compliance with ISO 8528, class G2.

### 2. COOLING SYSTEM

Radiator and pusher fan dimensioned for tropical climates. The radiator is mounted on the base frame to avoid vibrations coming from the engine and is equipped with adequate security protection guards.

### 3. FILTRATION SYSTEM

The engine is equipped with: dry air filter complete of security element, cartridge fuel filter and oil filter. All filters have replaceable cartridges.

### 4. EXHAUST SYSTEM

Industrial application exhaust silencers are supplied assembled on the engine or loose.

### 5. ELECTRICAL SYSTEM

12 Volt system with battery charging alternator. Starter motor. High performance maintenance free lead acid battery (on request). Battery rack mounted on the generating set base frame.

### 6. ALTERNATOR

Single bearing synchronous brushless alternator, four poles, mechanical protection degree IP21 and H class insulation. Standard connections: 12 terminals - 9 leads reconnectable. Tropical climates impregnation; on request, humid and corrosive climates treatment. All alternators are equipped with electronic voltage regulator.

### 7. MOUNTING ARRANGEMENT

#### 7.1 Base Frame

The complete generating set is mounted on a modern design and high quality steel fabricated base frame, bended without weldings, painted with epoxy coating. In the catch all base frame are located the fuel tank and the batteries. Anti vibration pads are fitted between engine-alternator and base frame ensuring complete vibration isolation of rotating assemblies.

#### 7.2 Coupling

Engine and alternator are directly coupled. The engine flywheel is coupled to the alternator rotor by means of flexible disks.

### 8. FUEL SYSTEM

Thermoplastic fuel tank with a total capacity of 180 liters is provided on the base frame. The fuel tank is equipped with a visual fuel level indicator. An oversized fuel tank of a capacity of 500 liters is available as option. Fuel tanks with special certifications are also available on request.

### 9. CONTROL PANEL

Manual and Automatic control panels are available in different configurations (see specific brochure).

### 10. OPTIONS

Generating set can be supplied with different options to meet the specific requirements of the customer (see specific brochure).

### 11. DOCUMENTATION

A full set of operation and maintenance manuals are provided with each unit.

### 12. FACTORY TESTS

Generating set is subject to a strict load test before delivery. A test certificate can be provided as option.

### 13. QUALITY STANDARDS

All the generating sets meet the following standards: 73/23/CE, 89/392/EE, 89/336/CE, ISO 8528, IEC 34.1. The generators used in our generating sets meet the following standards: ISO 8528, IEC 34.1, CEI 2.3, VDE 0530, BS 4999-5000, NF 51-100.

IVECO AIFO and 2HE are fully accredited ISO 9001 companies.

### 14. WARRANTY

Generating set is guaranteed for a period of 12 months from the start up date or 18 months from date of shipment whichever occurs earlier. Extended warranty is available on request.